

NATIONAL ADAPTATION PLAN OF ACTION

**THE PACIFIC PROGRAMME
TAITO NAKALEVU**



WHAT AND WHY NAPA?

- **NAPA is meant to be a:**
 - **Simplified and direct channel of communication for information relating to the urgent and immediate adaptation needs of Least Developed Countries (LDCs)**
- **Why?**
 - **Most vulnerable and the least able to adapt...**

NAPA FROM UNFCCC TO LDCs



**UNFCCC
DECISION 8
COP 8**

**GEF
FUNDED
PROJECT**

**UNITAR –
GUIDANCE
OF THE LEG**

DEVELOP LDCs

- Prepare
- Plan
- Implement

NAPA

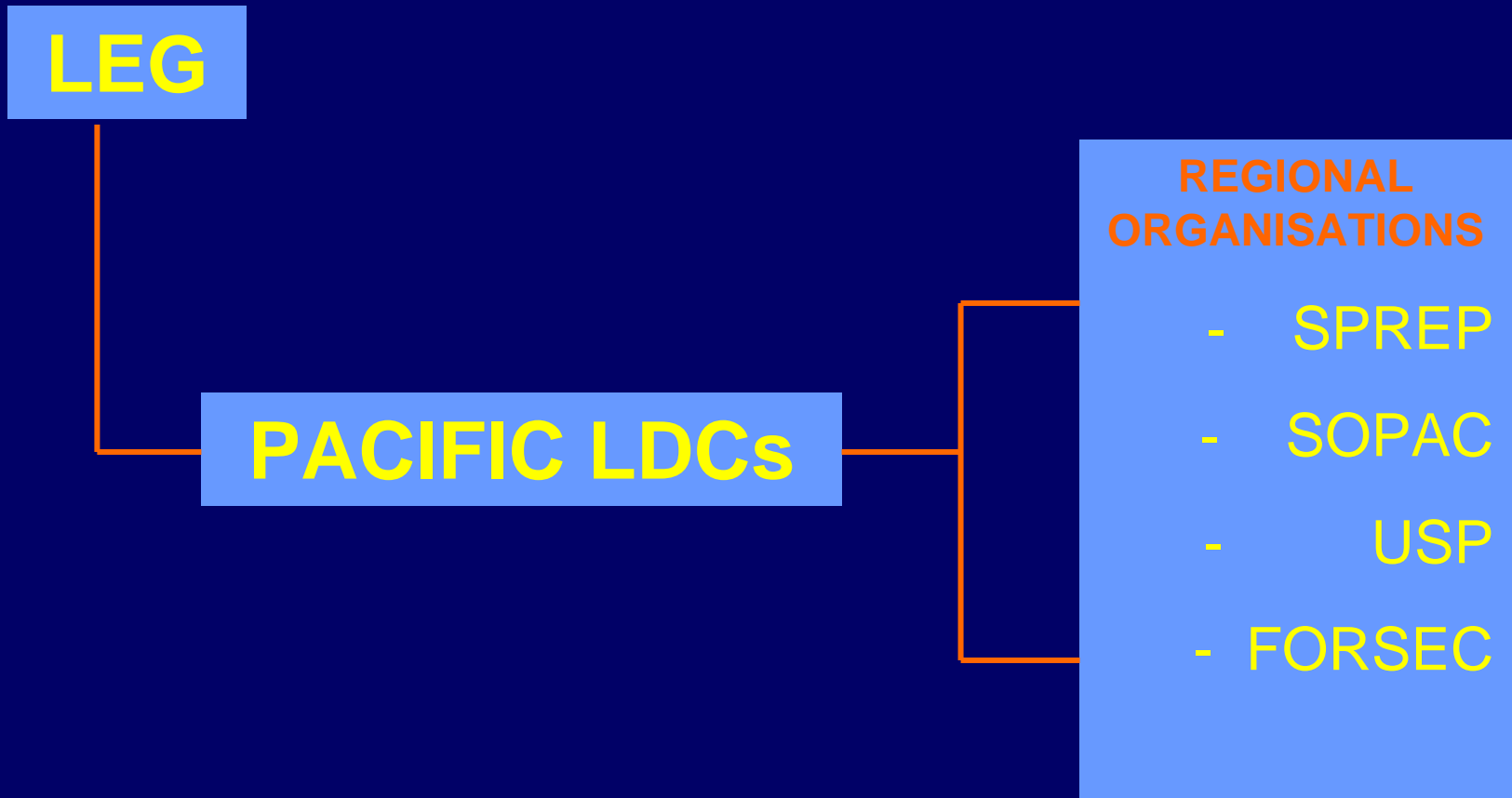


NAPA WORKSHOP SAMOA

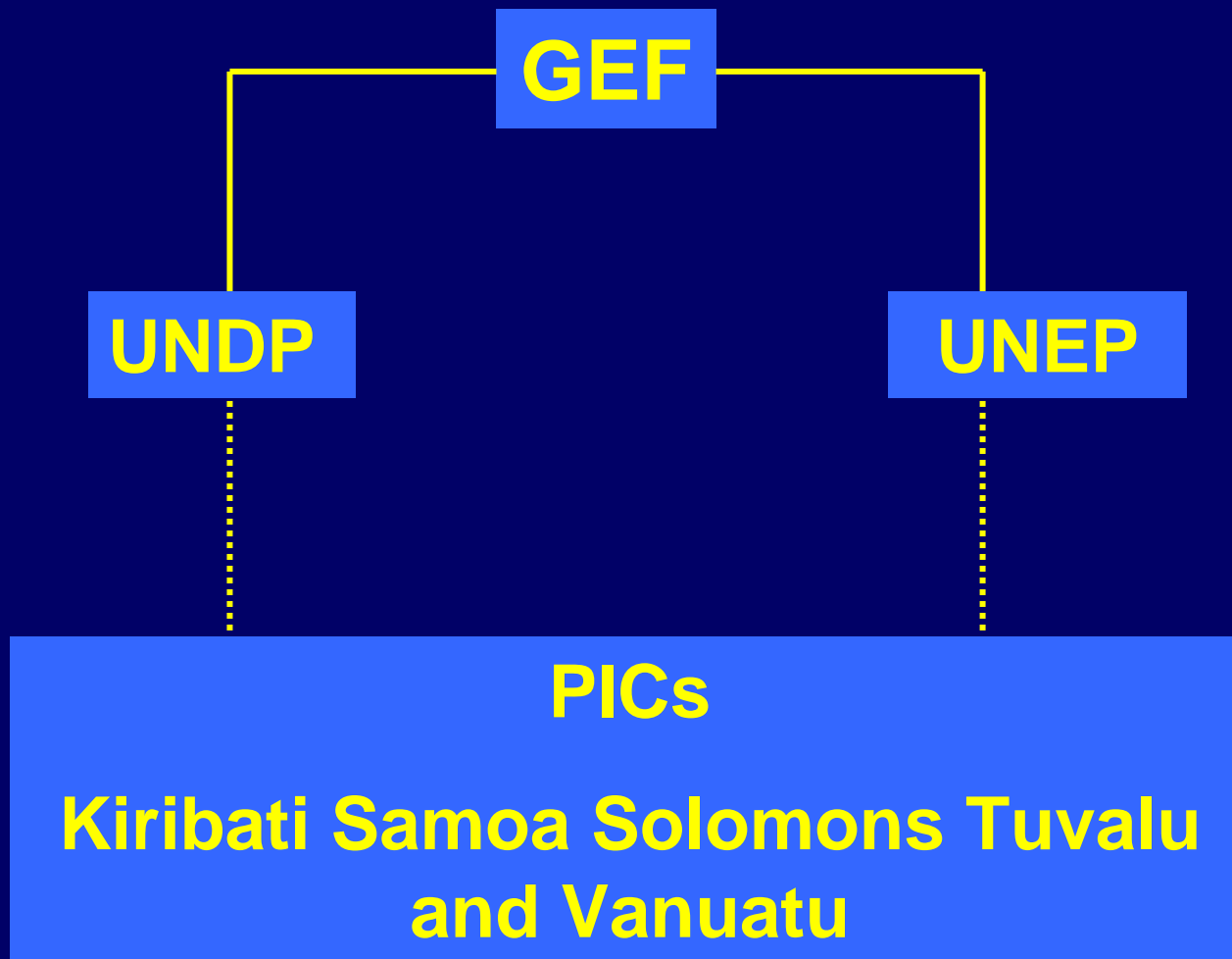
MARCH 2003

- TECHNICAL AND ADMINISTRATIVE ISSUES WERE DISCUSSED:
 - From PRA to Rapid Assessments;
 - Proposal Development;
 - Technical Backstopping Support to PICs;
and
 - Accessing of funds through relevant institutions

TECHNICAL BACKSTOPPING SUPPORT



FOR THE PACIFIC REGION



CURRENT STATUS

- **Most PICs are in the process of securing their NAPA funds from GEF through UNDP or UNEP...**

ROLE OF SPREP FOR THE NAPA IMPLEMENTATION



CURRENTLY...



**SPREP IS
EXECUTING A
CIDA FUNDED
ADAPTATION
PROJECT
-- CBDAMPIC --**

PROCESS

**TECHNICAL
BACKSTOPPING
SUPPORT**



THANKS

